



## CD Wizzard Main Topic

**How to... - how\_**

## Change Windows 95 Auto Insert Notification

To turn Windows 95 Auto Insert Notification or Autoplay on or off use the following procedure:

- Click the Start Button on the Windows Tray.
- Click the Settings Menu option.
- Click the Control Panel option.
- Double click the System icon.
- Click the Device Manager tab.
- Double click the CD-ROM entry.
- Double click the entry for your CD-ROM drive.
- Click the Settings tab.
- Under the Options group is the Auto insert notification checkbox.
- Check or uncheck the checkbox to control notification.
- Click the OK button to accept change.

## Export Disc Data to Other Programs

This is a description of the techniques to export disc data to other programs. Data exported to other programs is useful if CD Wizzard's database does not have the functionality the user needs such as, custom printing options.

### Microsoft Access (Office 95 version)

Run CD Wizzard.

Select the Discs then Disc Database command. Then use the selection fields to select the discs to be exported.

Press the Disc Commands Menu button. Select the Export All Discs Found Options command. On the Export Options dialog use the following options: First Record to Contain Field Names - Checked, Text Delimiter - Double Quotes, Field Separator - Comma, and Set the Tracks fields. Since a maximum of 256 fields are supported in Access make sure the Number tracks times the number track fields selected doesn't go over 256.

Press the Browse button to select an output file.

Press the Export button to export the data.

Run Microsoft Access.

Select Create a New Database.

Select File then Get External Data then Import command.

On the Import dialog, change the file type to Text Files. Then find and select the file that was just exported. Then press the Import button.

Leave Delimited button checked. Press the Next button. Make sure that Delimiter is Comma and Text Qualifier is " (double quote). Check the First Row Contains Field Names checkbox. Then press the Next button.

Select the Table to import the data into.

Select options for the fields. All fields should be set as Type text. Press the next button.

Press Finish button the complete the import.

### Microsoft Excel (Office 95 version)

Run CD Wizzard.

Select the Discs then Disc Database command. Then use the selection fields to select the discs to be exported.

Press the Disc Commands Menu button. Select the Export All Discs Found Options command. On the Export Options dialog use the following options: First Record to Contain Field Names - Checked, Text Delimiter - Double Quotes, Field Separator - Comma, and Set the Tracks fields. Since a maximum of 256 fields are supported in Access make sure the Number tracks times the number track fields selected doesn't go over 256.

Press the Browse button to select an output file.

Press the Export button to export the data.

Run Microsoft Word.

Select File then Open Command. Change File Type to Text Files. Then press the Open button.

Select the Delimited button. Then press the Next button.

• Select Delimiters of Comma. Select Text Qualifier of " (double quote). Then press the Next button.

• Select options for the fields. All fields should be set as Type text. Press the next button.

• Press Finish button the complete the import.

## Import Disc Data from Other Programs

This is a description of the techniques to import disc data from other programs. Importing of data is used to insert disc database entries from other programs. This is useful if the user is switching from another CD Player program and wishes to import the database into CD Wizzard. If the user has entered their disc collection into a database or spreadsheet it can be inserted into CD Wizzard's database.

### Microsoft Access (Office 95 version)

Run Microsoft Access.

Select the table to export. This should be a table that was imported from CD Wizzard. If not, you must make sure the data fields CD Wizzard needs are in the table.

Select File the Save As/Export command.

Make sure Save to External File checkbox is checked. Then press OK button.

Change the File Type to Text Files. Select the file name and location and press the Export Button.

Check the Delimited button. Then press the Next button.

Check the Comma button and the Include Field Names on First Row checkbox. Then press the Next button.

Press the Finish button.

Run CD Wizzard.

Select the Discs then Import Data into Database command.

Check the Text File checkbox.

Press the Set Text File Options button.

Select the Field Names to be imported and change the names, if needed. Also, set the Maximum Number of tracks to the number of tracks in the imported data file. Set the text delimiter - Double Quote and Field Separator - Comma.

Check desired Import Options radio button.

Press the Browse button to select the input file.

Press the Import button to import the data.

### Microsoft Excel (Office 95 version)

Run Microsoft Excel.

Open the spreadsheet to export. This should be a spreadsheet that was imported from CD Wizzard. If not, you must make sure the data fields CD Wizzard needs are in the table.

Select File the Save As command.

Change the File Type to Text (Tab Delimited). Select the file name and location and press the Save Button.

Run CD Wizzard.

Select the Discs then Import Data into Database command.

Check the Text File checkbox.

Press the Set Text File Options button.

• Select the Field Names to be imported and change the names, if needed. Also, set the Maximum Number of tracks to the number of tracks in the imported data file. Set the text delimiter - none and Field Separator - Tab.

• Check desired Import Options radio button.

• Press the Browse button to select the input file.

• Press the Import button to import the data.

## use Assign Orphan Disc Data Dialog

This is a description of the Assign Orphan Disc Data Dialog. The user selects an Orphan disc, then all data will be assigned to the current disc and the orphan disc will be deleted.

To get information on a function or area, click on it in the graphic below.





## use Copy Tracks Dialog

This is a description of the Copy Tracks Dialog. This dialog is used to copy disc information such as disc name, artist, label, category, comments, and track names to the Windows Clipboard. The information can then be pasted into any windows application such as Notepad or MS Word for Windows.

To get information on a function or area, click on it in the graphic below.



## use Cue Dialog

This is a description of the Cue Dialog. This dialog is used to position the CD-ROM drive to an exact position on the disc.

To get information on a function or area, click on it in the graphic below.



## use Database Options Dialog

This is a description of the Database Options Dialog. This is the dialog that is used to configure the options that affect the database.

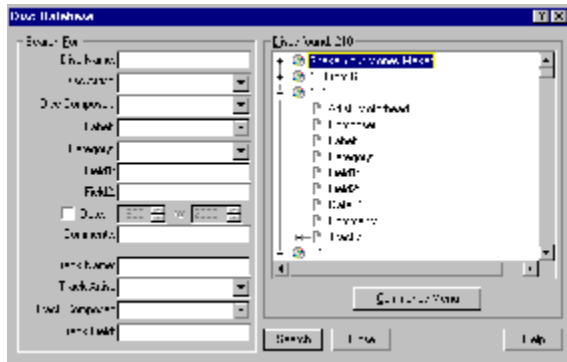
To get information on a function or area, click on it in the graphic below.



## use Disc Database Dialog

This is a description of the Disc Database Dialog. This dialog allows the user to search the database of CDs and displays all CDs meeting the selection.

To get information on a function or area, click on it in the graphic below.



## use Display Options Dialog

This is a description of the Display Options Dialog. This is the dialog that is used to configure the options that affect the look and feel of the main window.

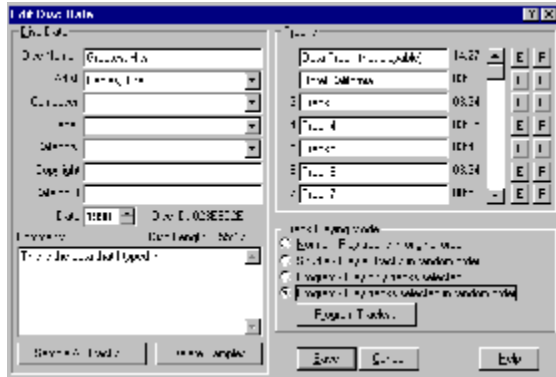
To get information on a function or area, click on it in the graphic below.



## use Edit Disc Data Dialog

This is a description of the Edit Disc Data Dialog. This dialog displays all information about a particular CD. This dialog can be used to enter the disc name and track names.

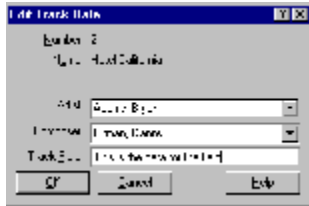
To get information on a function or area, click on it in the graphic below.



## use Edit Track Data Dialog

This is a description of the Edit Track Data Dialog. This dialog displays all data about a particular track. This dialog can be used to edit fields.

To get information on a function or area, click on it in the graphic below.



## use Event Sounds Options Dialog

This is a description of the Event Sounds Options Dialog. This is the dialog that is used to configure the different sounds that can be assigned to different events of CD Wizard.

To get information on a function or area, click on it in the graphic below.





## use Export Options Dialog

This is a description of the Export Options Dialog. This dialog displays the options for an export of disc data.

Please see the [Export Disc Data to Other Programs](#) for information on how to export disc data.

To get information on a function or area, click on it in the graphic below.

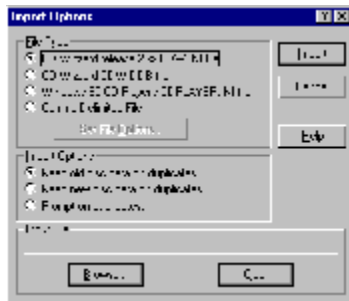


## use Import Options Dialog

This is a description of the Import Options Dialog. This dialog displays the options for an import of disc data.

Please see the [Import Disc Data from Other Programs](#) for information on how to export disc data.

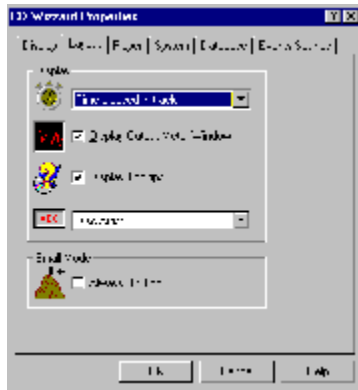
To get information on a function or area, click on it in the graphic below.



## use Layout Options Dialog

This is a description of the Layout Options Dialog. This is the dialog that is used to configure the options that affect the layout and placement of parts on the main window.

To get information on a function or area, click on it in the graphic below.



## use Main Window

This is a description of the CD Wizzard Window. The window is updated with the CD player's current status.


The main window will remember its current screen location from execution to execution.


To get information on a function or area, click on it in the graphic below.




## use Options


CD Wizzard is very customizable. The user has many options that can be set to his/her preference. The options are of the following categories:


 Display Options - options to configure the main window's look and feel.

 Layout Options - options to configure the main window's layout.

 Playback Options - options to configure the playing of CDs.

 System Options - options to configure the user's CD-ROM Drive and other system settings.

 Database Options - options to configure the user's disc database.

 Event Sounds Options - options to configure the user's event sounds.

## use Player Options Dialog

This is a description of the Player Options Dialog. This is the dialog that is used to configure the playing mode for CDs.

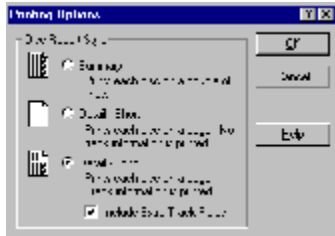
To get information on a function or area, click on it in the graphic below.



## use Print Options Dialog

This is a description of the Print Options Dialog. This is the dialog that is used to configure the printing of CD data.

To get information on a function or area, click on it in the graphic below.



## use Program Tracks Dialog

This is a description of the Program Tracks Dialog. This is the dialog that is used to select the tracks and order of play in programmed mode. The tracks can be dragged and dropped from the track list to the programmed tracks listbox.

To get information on a function or area, click on it in the graphic below.





## use Registration Dialog

This is a description of the Registration Dialog. This is the dialog that is used to register this software product.

To get information on a function or area, click on it in the graphic below.



## use Select CD Audio Input Dialog

The Select CD Audio Input Dialog is presented as a reminder to select the source for CD Audio Output on the user's mixer program. The mixer program that came with the user's sound card must be used to select the source from which the CD Audio Output is connected. This allows the music from the disc to be recorded. If the CD Audio source is not set, the samples will be blank due to no input source selected. The user may wish to try different volume levels with the mixer to determine the best setting for the recording of the samples.

For best results, use the mixer to set the volume level to maximum for the port connected to the CD-ROM drive.

After the samples are recorded the user may wish to reset the mixer to the previous settings.

To get information on a function or area, click on it in the graphic below.



## use Small Window

This is a description of the CD Wizzard Small Window. The window is updated with the CD player's current status.

The small window will remember its current screen location from execution to execution. Also, if CD Wizzard is exited in small mode, CD Wizzard will restart in small mode.

To switch to small mode press the Small Button and you will be switched into small mode.

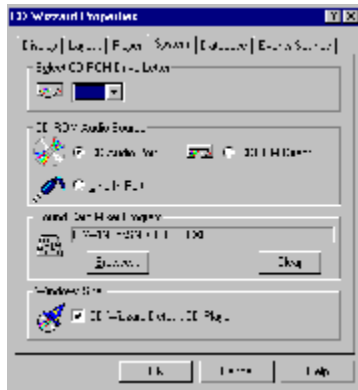
To get information on a function or area, click on it in the graphic below.



## use System Options Dialog

This is a description of the System Options Dialog. This is the dialog that is used to configure parts of your computer system for use with CD Wizzard.

To get information on a function or area, click on it in the graphic below.



## use Text File Options Dialog

This is a description of the Text File Options Dialog. The user can use this dialog to describe the text file's data format.

To get information on a function or area, click on it in the graphic below.



## use Track Play List Dialog

This is a description of the Track Play List Dialog. This is the dialog that is used to select a track to play from the play list. The user selects the track and double clicks or presses the play button.

To get information on a function or area, click on it in the graphic below.

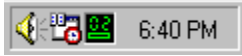


## use Tray Icon

This is a description of the CD Wizzard Icon on the system tray. The icon is updated with the CD player's current status.

The right mouse button may be pressed on the icon to display CD-ROM Controls Menu.

To get information on a function or area, click on it in the graphic below.



## use Tray Button

This is a description of the CD Wizzard Button on the system tray. A button is present for every running application on the user's system.

The right mouse button may be pressed on the icon to display system menu which will contain the CD-ROM Controls Menu.

To get information on a function or area, click on it in the graphic below.





**Windows - wnd\_**

## **Always on Top**

Selecting this checkbox will display the Small Window on top of all other displayed windows, even if CD Wizzard is not the current active application.

## Artist

This is the artist of the disc currently being played. This was entered from the Edit Disc Data Dialog.

## **Artist Field**

This field is used to enter the artist.

This field is a drop down listbox. The user may select a previously entered item from the list. As the user types, any matching list entries are automatically displayed.

## Background

These radio buttons allow the user to select the background for the main window. The different background choices are marbled, brushed aluminum, hammered steel, gray, and black. When a background is selected, a small sample is displayed. When black is selected, the entire display is switched to black including the button backgrounds.

## Button Color

These radio buttons allow the user to select the color of the buttons on the main window. The different colors are **black**, **green**, **blue**, and **red**. When a color is selected, a preview of the button color is displayed. When the button color is black and the background color is black, the button color will be set to white so that the buttons can be seen.

## **Caption Bar**

The caption bar of the window may be used to move the window around the screen. To do this, the user must click the left mouse button and then drag the window to a new location. The mouse button should be released when the user reaches the desired location.

## **Category Field**

The category combo box allows the user to select a category for the disc. Many categories are available such as Rap, Classic Rock and Vocalists.

This field is a drop down listbox. The user may select a previously entered item from the list. As the user types, any matching list entries are automatically displayed.



## CD-ROM Audio Source

These three radio buttons select the source that CD Wizzard uses to control the volume of the audio playback. The three sources follow:



CD Audio Port - this is the internal port on the sound card, usually used for internal CD-ROM drives.



Line-In Port - this is the input jack on the back of the sound card, usually used for external CD-ROM drives but, sometimes for internal drives with a line-out connector.



CD-ROM Direct - selecting this button causes CD Wizzard to directly access the CD-ROM drive to control the volume. This bypasses any mixer program on the system. Some CD-ROM drives do not allow the volume to be changed. They only allow full volume and no volume.

Note: Direct does not function while running under Windows NT.

Please refer to your CD-ROM drive and Sound card documentation for further details on which type of setup you have.

Note: If you do not have a sound card, CD-ROM Direct is the only way to control the sound of your CD-ROM drive.

## Comments

The comments field is a free-form area that can be used to enter any information about the CD. It will be saved and redisplayed when that CD is edited. This area may contain a few lines of text about the disc.

## **Composer Field**

This field is used to enter the composer.

This field is a drop down listbox. The user may select a previously entered item from the list. As the user types, any matching list entries are automatically displayed.

## **Compression Rate**

These push buttons are used to select the level of compression to be used during the sampling. The three levels allow the user to experiment with the best rate for the disc. The highest level (4 to 1 compression) uses less disk space, however, the sample's quality suffers. The normal rate of 3 to 1 compression is a compromise on size and quality. The low rate of 2 to 1 compression uses more disk space but, has the best quality.

## **Cue Position**

These fields are the position to Cue to or to position to. The track number, minute, second and frame may be entered. The track entered must be in the current play list if in programmed mode.

## **Custom Sound for Event**

This option will select a custom sound file for the event. Any standard windows WAV file can be used. It is recommended that the WAV file not be very long since some events will occur quite often.

## **Custom Sound Name**

This is the name of the custom sound WAV file.

This field is not editable. The Browse button should be used to select the custom sound WAV file. The Clear button can be used to clear the field.

## **Data**

These fields are the user's return address data. The user must enter all information needed so that mail can be delivered to the correct address.



## **Date**

This field contains the year for the disc. This date field's meaning is up to the user. For instance, it could be the copyright date or date purchased.

## **Default CD Player**

This checkbox determines whether CD Wizzard is used as the Windows shell CD player. If the checkbox is checked, when a user selects Play in the Explorer or an audio CD is inserted, CD Wizzard will be started. If the checkbox is not checked, the Windows CD Player will be started.

## **Delete Disc After Assigned**

If this checkbox is checked, the selected disc will be deleted after its data is copied to the current disc's database entry.

## **Disc Data Fields**

These fields are used to specify the names of the disc fields in the input file. This allows a user to change the name from the default name that CD Wizzard uses.

## **Disc Field Names**

These fields are used to specify the names of Disc Field1 and Field2. These fields can be renamed by the user to whatever meaningful name that is desired. "Where Purchased" and "Price" are examples. The names entered will be used throughout CD Wizzard.

## **Disc Fields**

These Disc Fields are used for whatever the user decides to put in them. The names of the fields may be changed by going to the Database Options Dialog and renaming the fields.

## **Disc ID**

This is the disc identification number. This number is created by CD Wizzard to uniquely identify each disc. This number is not read from the audio CD, it is generated from the data on the audio CD.

## **Disc Length**

This is the total length of the current disc in minutes and seconds.



## **Disc Name List**

This is the list of all disc names and fields for the disc that have met the selection criteria from the disc database. The user will select a disc name and then press the right mouse button to generate the Treeview Command Menu. The user can also press the Disc Commands Menu button to produce the Treeview Command Menu. Left clicking on an item will activate in place editing of the item.

## **Disc Name**

This is the name of the disc currently being played. This was entered from the Edit Disc Data Dialog.

## **Disc Name Field**

This field is used to enter the name of the disc.

## **Display Output Meter Window**

Selecting this checkbox will display the Output Meter on the Main Window.

## **Display Tool Tips**

Selecting this checkbox will display tool tips for all buttons and mouse hot points on the Main and Small Windows.

## **Drive**

This combo box contains the drive letters of all installed CD-ROM drives on the system. The user is to select the drive letter of the drive to control the volume.

## **Embossed Text**

Selecting this checkbox will cause all text in the disc name, track name and status bar to be embossed or have a sunken 3-D effect.

## **Enable Sounds**

When this checkbox is selected all the other fields will be enabled. The user will be able to assign different sound effects for events of CD Wizzard.



## **Event List**

This is the list of events that sound effects can be assigned. The sound effect that is assigned will be played whenever the event occurs.

## **Export File Name**

This is the name of the export file. This file will be created or overwritten.

This field is not editable. The Browse button should be used to select the export file name. The Clear button can be used to clear the field.

## Field Separator

The Field Separator combo box lists the different characters that can be used to separate fields in the exported file. The separator may be a comma (,), space ( ), tab character, or carriage return - line feed. Carriage return - line feed can only be exported, it is not supported for importing. An example of comma delimited fields is:

"Field A","Field B","Field C"

## **First Record to Contain Field Names**

The First record to contain field names checkbox is used to indicate if the first record exported will contain the field names of the CD Wizzard data fields. Most databases and word processors will optionally use the first record as the field names. Also, this feature allows automatic creation of a database or a mail merge word processing document.

## **Import File Name**

This is the name of the import file.

This field is not editable. The Browse button should be used to select the export file name. The Clear button can be used to clear the field.

## **Import CD Wizzard Release 2.xx CDW.INI File**

When this radio button is selected, the user can select a CD Wizzard release 2.xx CDW.INI and DATAxx.INI files for importing. The Browse Button is used to find the directory where the INI files are located.

## **Import CD Wizzard CDW.DDB File**

When this radio button is selected, the user can select a CD Wizzard CDW.DDB file. This can be useful if the user wants to copy data from a database in another directory. It can also be useful to copy the data from a friend's database. The Browse Button is used to find the directory where the INI files are located.

## **Import Text File**

When this radio button is selected, the user can select a text file. This can be useful if the user wishes to copy data from another CD Player program. The user must know the exact format of the data exported from the CD Player program. This option may also be used to import data that was exported and then edited in a word processor, database, or spreadsheet program. These programs allow for more features in editing than CD Wizzard can provide.



## **Import Options**

These radio buttons are used to specify what happens on duplicate entries on the imported data. The user can select from keeping the old data, keeping the new imported data or being prompted for each duplicate entry found.

## **Import Windows CD Player CDPLAYER.INI File**

When this radio button is selected, the user can select a Windows CD Player CDPLAYER.INI file for importing. The Browse Button is used to find the directory where the CDPLAYER.INI file is located. This file is usually in the Windows directory. This allows the user to import data that was entered into Windows CD Player database.

## **Include Track Fields in Export**

These checkboxes are used to specify which fields will be included in the export. Any, all or none of the following can be selected to be exported for the track: name, artist, composer, field or length.

## **Include Extra Track Fields in Report**

This checkbox is used to specify if the track extra fields (Track Artist, Track Composer and Track Field) are to be included in the report.

## **Label**

This field is used to enter the label or company that produced the CD.

This field is a drop down listbox. The user may select a previously entered item from the list. As the user types, any matching list entries are automatically displayed.

## LED Color

These radio buttons allow the user to select the color of the LED Displays on the main window. The different colors are green, yellow, blue, and red. When a color is selected, a preview of the LED color is displayed.

## **Maximum Number of Tracks**

This field is the maximum number of tracks to be exported. Even if a disc contains more tracks than this number, only this maximum number will be exported. The discs that contain more tracks will be truncated. This is useful for some word processors that cannot handle a large amount of columns. Most programs only handle a maximum of 256 columns or fields.

## **Maximum Number of Tracks**

This field is the maximum number of tracks to be imported. This will define how many track field groups are present in each entry. Some programs do not handle the real maximum of 99 tracks per disc. This allows for importing a smaller number of track disc entries.



## **Minutes**

This is the number of minutes that may be used as the length of time to be programmed. A number between 1-99 must be entered. The spinbox on the right may also be used to increase or decrease the number of minutes. After the number of minutes is entered, the Set Tracks button must be pressed to program the desired track length in minutes.

## **Mixer Name**

This is the name of the mixer program for the user's sound card. The mixer program is used to set the volume of inputs and selects which inputs are currently being used.

The Browse button is used to select the mixer program for the user's sound card. The Clear button is used to clear the field.

## **No Help Available**

There is no help available for this control or area.

## **No Sound for Event**

No sound will be played for this event.

## **Normal Mode**

The normal mode of playback will play all tracks of the CD in the original order.

## **Number Found**

This field is the number of discs found in the disc list for the Search For criteria.

## **Number of Discs**

This will display the number of disc entries in the disc treeview above.

## **Orphan Disc List**

This listbox contains the list of orphan disc entries in the database. The Show All Discs checkbox can be selected to show normal disc entries.



## **Output Meter Display**

This is the display of the Output Meter. The display has an automatic level control that adjusts the display based on input level. If the display is just a line, then most likely CD input is not selected in the mixer. The user must press the Mixer Button and select CD input.

## **Playback Mode**

This is the current playback mode of CD Wizzard. It can be Normal, Shuffle, Programmed or Programmed Random.

## **Print Long Detailed Disc Report**

When this radio button is selected, a very detailed report will be sent to the printer. All information on each disc selected in the Disc Database Dialog will be printed on a separate page in the report. If the print extra track options checkbox is checked the track extra fields will also be printed.

## **Print Short Detailed Disc Report**

When this radio button is selected, a detailed report will be sent to the printer. All disc information, but no track information on each disc selected in the Disc Database Dialog, will be printed on a separate page in the report.

## **Print Summary Disc Report**

When this radio button is selected, a summary report will be sent to the printer. Most of the disc fields will be printed in a line mode report. This is useful to get a complete list of a user's disc collection. Multiple discs are printed on each page of the report. A page heading is printed at the top of each page.

## **Program Mode**

The program mode of playback will play all tracks of the CD selected by the user in the Program Tracks dialog.

## **Program Random Mode**

The program random mode of playback will play all tracks of the CD selected by the user in the Program Tracks dialog. This track order will be randomly selected each time the disc is played.

## **Programmed Length**

This is the total length, in minutes and seconds, of the currently selected tracks that have been added to the Programmed Tracks listbox.



## **Programmed Tracks**

This is a listbox that lists all the tracks that have been programmed by the user. If a track is selected, the user may press the Clear Track(s) button to remove that track. A track may be clicked on and dragged to the trashcan icon in order to be removed. A track may also be removed by double clicking the track.

## **Replay Mode**

This is the replay mode of CD Wizzard. The combo box contains the options No Replay - do not replay at all, Replay Current Track - replay the current track continuously, and Replay Current Disc - replay the current disc continuously.

## Replay Mode Display

This option allows the user to select from three options:

- Replay None - stop at the end of the audio CD
- Replay Track - replay the current track until stopped
- Replay Disc - replay the current audio CD until stopped

## **Scan Length**

This is the number of seconds each track will be played during Track Scan Mode.

## **Scan Offset**

This is the number of seconds from the beginning of each track that playing will start during Track Scan Mode.

## Search For

These fields are the fields to be searched for. The strings entered in the fields are searched for in the entire field. For example, the entered data: "**at**" will find fields: "**Bat**", "**Attempt**", and "**Bath**".

For a disc to be selected all fields must match. So, if search data is entered in the disc name, artist, and composer fields, a disc must match all three to be selected.

The Composer, Artist, Label, and Category fields are combo boxes. The user may select the exact item to be searched for from the list. When the listbox is dropped, as the user types, any list entries that match are automatically displayed.

## **Select CD-ROM Drive**

This option allows users with multiple CD-ROM drives to select a drive to use with CD Wizzard. All the drives attached to the system will be displayed. The user must select the drive for CD Wizzard to use for playing audio CDs. If the currently selected drive is playing, it will be stopped before the new drive is selected.

## **Shuffle Mode**

The shuffle mode of playback will play all tracks of the CD in a random order. Each time the disc is replayed, a different order will be selected.



## **Show all Discs**

Selecting this checkbox will cause all discs to be listed in the listbox above. If the checkbox is not checked, only Orphan Discs will be displayed.

## **Start playing on startup**

This checkbox indicates whether CD Wizzard will automatically start playing an audio CD when it is inserted into the CD-ROM drive. If selected, it will cause CD Wizzard to start playing when CD Wizzard is first executed. This allows CD Wizzard to be placed in a user's Startup Group and have an audio CD begin playing at Windows startup.

## **Status Bar Display**

This is the status bar display. It will display the current status of the CD player such as playing, stopped, etc. It will also display short help messages when the mouse cursor is dragged over certain areas on the window or on menu items. This occurs if the user has the Status Bar Help Text option turned on in the Layout Options Dialog.

## **Status Bar Help Text**

When selected, help messages are displayed on the status bar as the mouse is dragged over different areas of the screen. These messages explain the various areas of the main window that can be clicked on.

## **Stock Sound for Event**

This option will select a stock sound for the event. Stock sounds are built into CD Wizzard. No external WAV files are needed. Select a stock sound from the Stock Sound List.

## **Stock Sounds List**

This is the list of stock sounds available. The sounds are built into CD Wizzard. No external WAV files are needed.

## **Stop Playing on Exit**

This checkbox indicates whether CD Wizzard should stop playing on exit from the program.

## **Tabs**

These tabs are used to switch between the different option pages.



## Text Color

These radio buttons allow the user to select the color of the text in the Disc Name, Track Name, and Status Bar areas on the main window. The color choices are **black**, **blue**, and **red**. When a color is selected, a preview of the text color is displayed.

The embossed text checkbox indicates if the text should be embossed, meaning that it would have a 3-D inset. When the option is changed, a preview of the text is displayed. When the text is not embossed and both text and background colors are set to black, the text color will automatically be set to white so the text can be seen.

## **Text Delimiter**

The Text Delimiter combo box lists the different characters that can be used to indicate the start and end of fields in the exported file. The delimiter may be double quotes ("), single quotes ('), or none. An example of single quote delimited fields is:

"Field A","Field B","Field C"

## **Text Display**

This is the text of the Disc Artist, Disc Composer, Disc Field1, Disc Field2, Track Artist, Track Composer, or Track Field. The name to be displayed is selected from the Layout Options Dialog.

## **Text Display**

This combo box lists the choices for the Text Display on the Main and Small Mode Windows. Disc Artist, Disc Composer, Disc Field1, Disc Field2, Track Artist, Track Composer, or Track Field are the choices.

## **Time Display**

This is the time mode display of CD Wizzard. This combo box contains the time display modes for the main window. The display is in minutes and seconds. The user can select between the four modes: Time Elapsed in Track, Time Remaining in Track, Time Elapsed in Disc and Time Remaining in Disc.

## **Time Mode Display**

This is the current time mode. The four possible modes are Track Elapsed, Track Remaining, Disc Elapsed and Disc Remaining. The user clicks on the Time Mode to cycle the next mode. It can also be changed from the Player Options Dialog.

## **Track Artist**

This field is used to enter the artist for the track.

This field is a drop down listbox. The user may select a previously entered item from the list. As the user types, any matching list entries are automatically displayed.

## **Track Bar Chart**

This is a bar chart showing the amount of the track that has been played. On the main window, but not on the icon window, the user can click the left mouse button on the bar chart to reposition to that point of the track.



## Track Box Display

This is the display of the tracks on the disc. Any track may be selected by clicking the left mouse button on the track number. The selected track will begin to play.



All of the tracks will start out having the LED Color selected in the Display Options Dialog. The track that is currently being played will be **purple**. Tracks that have already been played will be **gray**.

**Note:** The tracks will not be grayed in Programmed Mode. Tracks not in the play list will not be displayed when in Programmed Mode.

## **Track Composer**

This field is used to enter the composer for the track.

This field is a drop down listbox. The user may select a previously entered item from the list. As the user types, any matching list entries are automatically displayed.

## **Track Data Fields**

These fields are used to specify the names of the track fields in the input file. This allows a user to change the name from the default name that CD Wizzard uses.

## **Track Field Name**

This field is used to specify the names of the Track Field. This field can be renamed by the user to whatever meaningful name that is desired. "Where Purchased" and "Price" are examples. The names entered will be used throughout CD Wizzard.

## **Track Field**

This field is used for whatever the user decides to put in it. The name of the field may be changed by going to the Database Options Dialog and renaming the field.

## **Track List**

This is a listbox with information on the tracks of the current disc. The listbox contains the track number, name and length for each track. A user may click on a track and drag it to the Programmed Tracks listbox to program that track. A user may also double click a track to add it to the bottom of the Programmed Tracks listbox.

## **Track Name**

This is the name of the track currently being played. This was entered from the Edit Disc Data Dialog.

## **Track Name**

This is the name of the track currently being edited. This field must be edited on the Edit Disc Data Dialog.



## **Track Name List**

This is the scrollable list of tracks for the disc being edited. This group of editboxes can be scrolled up and down with the scrollbar to the right. As another option, the tab key can be used to move among the different tracks. When the user tabs to the second from the last entry, the list will be scrolled automatically to the next entry in the list. When the user back-tabs to the second entry, the list will be scrolled automatically to the previous entry in the list.

## **Track Number**

This is the display of the current track that is being played.

## **Track Number**

This is the number of the track currently being edited.

## **Track Number Field**

This is the field name of the number of tracks on the disc entry being imported. This field is required for imported records.

## **Track Play List**

This listbox contains the order of the tracks currently selected from the disc. This order will be sequential for Normal mode, random for Shuffled mode and chosen order for Programmed mode.

## **Track Play List Edit Control**

This edit control contains the order of the tracks currently selected for the disc. This order will be sequential for Normal and Shuffled mode and in a chosen order for Programmed mode. It will also contain the Disc Name and Comments for the disc.

The user can select any part of the edit control and press the Copy button to copy the text onto the windows clipboard.

## **Track Scrollbar**

This is the scrollbar that controls the scrolling of the Track Name entry fields.

## **Track Time**

This is the display of the current time position of the track that is being played.



## **Trashcan**

This is a trashcan icon. It can be used to remove tracks from the Programmed Tracks listbox. This is done by dragging the track name and dropping it on the trashcan icon.

## **Tray Window Button**

This is the CD Wizzard Tray Window Button. The user can right click on this icon to get a system menu. From that menu the CD-ROM Menu can be displayed. From the CD-ROM Menu the CD-ROM drive can be controlled. It will also display the current track being played and the relative position of the track being played as a bar chart.

## Tray Icon

This is the CD Wizzard System Tray Icon. It displays the current track being played and the relative position of the track as a bar chart.

Click the right mouse button on the CD Wizzard Tray Icon and the CD-ROM Controls Menu will be displayed. Left click on the icon and play/pause will be toggled. Double left click on the icon and the Main Window will be restored.

The tool tip for the icon will be SSSS-MM:SS-NNNN. SSSS is the status of the CD-ROM drive, MM:SS is the current disc time, and NNNN is the current track name. Only the first 50 characters of the track name will be displayed.

## **Volume Display**

This is the volume level display. The user clicks the left mouse button on the volume level to change the volume. The volume can also be controlled by the Up and Down buttons in large mode. The volume display device is set in the System Options.

## **Unused Categories List**

This is the list of the stock categories not currently in use in the database. The user may wish to remove these extra categories from the database by selecting one or more categories and then pressing the Delete Selected Button.

## **Use Default CD-ROM Drive**

This checkbox is used to indicate if CD Wizzard is to use the default system CD-ROM drive. This option should only be needed if your system doesn't support selecting a CD-ROM drive by drive letter. This seems to happen with PAS16 cards.

## **User Key**

This is the user key. This is a user code that is built from the user's name. All letters in the name are used in the key. Different spelling and capitalization produce different keys. For example, John Doe, john doe and JOHN DOE produce different keys. The user sends the Key to BFM Software which is what the password is generated from.

## **User Name**

This is the user name. The fields are first name, middle name, and last (surname). The full name must be at least eight characters long. The name cannot contain blanks. All letters in the name are used for the registration. Names entered with different spelling and capitalization will produce different keys. For example, John A. Doe, JOHN A. DOE, and john a. doe produce different keys. Since the key is used with your registration password, the way the name is entered is very important for successful registration.



## **User Password**

This is the user password. The password is sent to the user in the registration package when a user registers. This password allows the user to gain full access to the software.

## **Windows Clock Display**

This is Windows tray clock. It will display the current time.

## **Windows Start Button**

This is Windows start button. This is used to display the Windows system menu.

## **Windows Volume Control**

This is Windows volume control. It can be used to control the volume of the CD-ROM drive or other devices. You can also use the volume control of CD Wizzard.

**Buttons - butt\_**

## A/B Button



This button will allow the user to select a portion of a track to be played over and over. The user starts the player to play a track then presses the A/B Button the first time to select the start position (the A position). Next, the user presses the A/B Button again to select the end position (the B position). The selection of the track will play over and over until the A/B Button is pressed again or any other player button is pressed.

## **Add All Tracks Button**

This button will add all tracks to the end of the Programmed Tracks listbox.

## **Add Track(s) Button**

This button will add the selected track(s) to the end of the Programmed Tracks listbox.



## **Assign Button**

This button will assign the selected disc's data to the current disc's database entry.

## **Browse for Custom Sound Button**

This button will display a file open dialog so the user can select the custom sound WAV file. The WAV file should not be very long because some events occur often.

## **Browse for Export File Button**

This button will display a file open dialog so the user can select the export file or enter a new file name. This file will be created or overwritten if it exists.

## **Browse for Import File Button**

This button will display a file open dialog so the user can select the import file.

## **Browse for Mixer Button**

This button will display a file open dialog so the user can select the mixer program supplied with the user's sound card.

## **Cancel Button**

This button will cause the current dialog to be closed and all information entered on the dialog will be discarded and not saved.

## **Check or Money Order Registration Button**

This button will display a dialog with the instructions on how to register CD Wizzard by mail with a check or money order.

## **Clear All Tracks Button**

This button will remove all tracks in the Programmed Tracks listbox.



## **Clear Custom Sound Name Button**

This button will clear the Custom Sound Name field.

## **Clear Export File Name Button**

This button will clear the Export File Name field.

## **Clear Import File Name Button**

This button will clear the Import File Name field.

## **Clear Mixer Button**

This button will clear the Mixer Name field.

## **Clear Track(s) Button**

This button will remove selected track(s) in the Programmed Tracks listbox.

## **Close Button**

This button will cause the current dialog to be closed.

## **CompuServe Online Registration Button**

This button will display a dialog with the instructions on how to register CD Wizzard online by using CompuServe's Online registration system.

## **Copy Button**

This button will copy the selected text in the Copy Tracks edit control to be copied to the Windows Clipboard.



## **Copy Tracks Button**

This button will bring up the Copy Tracks dialog on the selected disc. All disc information, such as Disc Name, Artist, etc. and track information for the current play list will also be displayed.

## **Credit Card Phone Registration Button**

This button will display a dialog with the instructions on how to register CD Wizzard by phone with a credit card.

## **Cue Button**

This button will display the Cue Dialog. The dialog allows an exact position on the CD to be Cued or positioned to.

## **Delete Button**

This button will cause all information about the selected disc(s) to be deleted.

## **Delete Samples Button**

This button will cause the CWV file which contains the track samples for this disc to be deleted.

## **Delete Selected Button**

This button will delete the selected Category(s) from the database.

## **Disc Commands Menu Button**

This button will display the Treeview Command Menu which contains a list of commands that can be performed on the Disc List.

## **Down Button**

–

This button will cause the volume of the CD player to be decreased. The volume will be unmuted, if needed.



## **Edit Button**

This button will bring up the Edit Disc Data dialog on the selected disc.

## **Edit Disc Data Button**

This button will invoke the Edit Disc Data dialog for the disc in the CD player.

## **Edit Track Data Button**

This button will invoke the Edit Track Data dialog for the track of the disc selected.

## **Events Clear All Button**

This button will set all the sound events to have no sound assigned for the event.

## Eject / Close Button



If a CD is in the drive, this button will cause the CD to be ejected from the CD player. Some older drives do not support software ejecting. It can only be done by a button on the CD-ROM drive. Some CD-ROM drives have a disc tray that the disc lays on. This button can also be used to close the tray door with drives that have a tray.

On some CD-ROM drives, it might be necessary to press the eject button twice when there is no disc in the CD-ROM drive in order to get the tray door to open.

## **Events Set Defaults Button**

This button will set all the events to preselected stock sounds.

## **Event Sound Preview Button**

This button will play the sound assigned to the selected event.

## Exit Button



This button will cause CD Wizzard to exit.



## **Export Button**

The Export Button is used to export the data of the selected disc(s) to a file. The exported file can then be imported into any one of many database and word processing products currently available. Almost all of these products support a flat file import. This allows users to utilize the power of the database or word processor to print or create reports on their CD collection that is stored in CD Wizzard.

When the Export Button is pressed, a Save As Dialog will allow the user to select the exported file's name and location. Then the Export Options Dialog will allow the user to select the format for the exported file such as delimiters and separator characters. After the file has been exported, the user can go to the database or word processor and import the file.

## Forward Button



This button will cause the CD player to skip forward 15 seconds in the current track. If the button is held down, it will continue to skip forward in 15 second intervals.

## **Help Button**

This button will start the Windows Help System with help on the current dialog.

## **Import Button**

This button will start the import of the data into the database.

## Large Button



This button will cause CD Wizzard to go into large mode. CD Wizzard stays in large mode until it is set to small mode again.

## Mute/Unmute Button



This button will toggle the state of the volume being muted or not. If the volume is not already muted, it will become muted (volume level set to zero). If the volume is muted, it will be restored (unmuted) to the previous volume level.

## **OK Button**

This button will cause the current dialog to be closed and all information on the dialog to be saved.

## Output Meter Button



This button will cause the Output Meter to be turned on or off. The user should be aware that the Output Meter takes a lot of system resources. It may cause the user's system to slow down when other applications are executing. The Output Meter is automatically turned off when CD Wizzard is minimized and turned back on when restored.



## Play / Pause Button



This button will cause the CD player to begin playing if the CD player was paused or stopped. If the CD player is playing, it will pause playing.

## **Play Sample Button**

This button plays a sample of the beginning of the track selected. A Compressed WAV file must have been created previously by sampling the disc. The quality of the playback will be somewhat less than that of the CD due to compression of the sample file.

## **Play Track Button**

This button will cause the CD player to begin playing the track selected in the listbox.

## **Print Button**

This button is used to start the printing of the report.

## **Program Tracks Button**

This button is used to bring up the Program Tracks dialog. This button is only active when the program playing mode is selected.

## **Register Button**

This button will cause the user's name, key and password to be validated and saved in the system. The program will now be registered and all software security will be deactivated. When this occurs, the program will be fully functional.

## Reverse Button



This button will cause the CD player to skip back 15 seconds in the current track. If the button is held down, it will continue to skip back in 15 second intervals.

## **Sample All Tracks Button**

The button will cause all tracks on the currently inserted disc to be sampled. The first 5 seconds of each track will be recorded and compressed. CD Wizzard will resample the next 5 seconds if the sampled section is very quiet. This resampling assures the samples will contain music. The samples will be saved in a CWV (compressed WAV file). The track samples will be able to be played back even when the disc is not in the drive. Samples are very useful in finding a disc to play by listening to the sample to determine which disc a particular track is on.



## **Save Button**

This button will cause all information on the dialog to be saved.

## Scan Button



This button will cause the number of seconds specified in the Player Options of each track in the play list to be played. Pressing the scan button while scanning will cause the track to continue playing normally.

## **Search Button**

This button will apply the "Search For" criteria to the disc database and display the discs found.

## Select All Button

This button will select all entries in the Disc Name Listbox.

## **Set Text File Options Button**

This button will invoke the Text File Options Dialog. The user can define the text file's data format with this dialog.

## **Set Tracks Button**

This button will clear all currently selected tracks in the Programmed Tracks listbox. Then a list of tracks in the Programmed Tracks listbox will be created that equals or comes as close as possible to the number of minutes entered.

## Small Button



This button will cause CD Wizzard to go into small mode. CD Wizzard stays in small mode until it is set to large mode again.

## Start Mixer Button




This button will cause the currently selected mixer program to run. The mixer program is selected in System Options Dialog.



## Stop Button



This button will cause the CD being played to stop. The CD player will reset to the first track in the sequence. The CD player can be restarted by pressing the play  button.

## Track Forward Button



This button will make the next track the current track. If the CD player is currently being played, the track will begin to play. If shuffle or programmed is selected, the next track in the play list will be selected to play.

## **Track Info Button**

This button will invoke the Track Information Dialog for the tracks currently being played in the CD player.

## Track Reverse Button



This button will either make the previous track the current track or jump to the beginning of the current track if more than 5 seconds have been played. If the CD player is currently being played, the track will continue to play at the new location. If shuffle or programmed is selected, the previous track in the play list will be selected to play.

## Up Button

+

This button will cause the volume of the CD player to be increased. The volume will be unmuted, if needed.

**Miscellaneous - misc\_**

## Common Problems and Answers

This section contains a list of common problems and answers using CD Wizzard. The following are some of the most common problems:

CD-ROM drives have problems playing some audio CDs. The drive will appear to loop or just reset occasionally. This could be due to a dirty lens pickup system. Buy a CD cleaning disc from an audio store. Run the disc through the CD-ROM drive. If the problem is still present, contact the maker of the CD-ROM for service.

Data CD-ROM discs do not have the same format as audio CDs. Data CD-ROM discs will cause a Data Disc message to be displayed in CD Wizzard.

While CD Wizzard is playing during the access to your CD-ROM drive, your system may slow down slightly. The slowdown should only be minor.

If you see the display of CD Wizzard update but hear no sound, make sure your CD-ROM drive's output is hooked up to the input of the sound card. You can use a simple patch cord to connect the line out of the CD-ROM drive to the Line-In of the sound card. Then set Line-In of the System Options Dialog.

If the Output Meter display is just a flat line, then most likely the correct digital audio source is not selected in your mixer. Press the Mixer Button and select the audio source that your CD-ROM drive is connected too.

The system slows down when the Output Meter is on. The Output Meter uses a lot of system resources. Some systems are not able to keep up with the demands of the Output Meter plus other applications at the same time. Turn the Output Meter off when other applications are run to get better system performance.

When the volume control is not working, it is usually because the CD Audio source has not been set in the System Options Dialog. Try to set it to Line-In if the drive is connected externally. The Drive option should be used if the sound card does not have a mixer.

If database errors are occurring, use the Verify and Repair Database Command to repair the database.

If you get the error message "Cannot use filename with the specified device". Go to CD Wizzard's System Options and check Use Default CD-ROM Drive. This seems to fix the problem. It appears to happen mostly on PAS16 sound cards.

## Copyright and Licensing



Copyright © BFM Software 1996

Copyright © Brett McDonald 1996

Following are the system requirements:

- 1) 486 or higher processor
- 2) Windows 95 or Windows NT 4.0
- 3) Mouse or other pointing device
- 4) Color monitor - High SVGA resolution recommended.

This software is shareware. This software is NOT free. If you like the software and continue to use it, you MUST register the program. To register please select the File Command then the Registration command on the main window for instructions.

Following are our eMail IDs:

Compuserve ID - 73770,1254 or BrettMc

America On-line ID - BrettMc

Internet - BrettMc@aol.com

MSN - BrettMc

You may distribute this software as long as the following files are included:

CDWREAD.TXT  
FILE\_ID.DIZ  
CDW.EXE  
CDW32HLP.DLL  
CDW16HLP.DLL  
CDW.HLP  
CDW.CNT

All of the above files, must be combined into a single file ZIP or other compression format for distribution.

Beyond a fee for the reproduction and media cost, no fee may be charged for distribution of this software.

This software claims no warranty, implied or otherwise. This software is provided "AS IS". The author claims no responsibility for any damages that might be caused by the use or abuse of this software. This software remains the property of the author. This software may not be modified in any way.



## **Differences between Small Mode and Large Mode**

This is a description of the differences between CD Wizzard when in Small Mode and Large Mode.

Small mode is useful when the user wants CD Wizzard to use a small amount of screen space. It does have an Always On Top option so a small mode window will always be visible. It does not have a menu bar so, menu only commands cannot be accessed.

Large mode contains access to all features of CD Wizzard. It does take a large amount of screen space in lower resolutions.

Both small and large modes have there uses. It is very easy to change between them both, with the use of the small and large mode buttons.

## Registration

You may register this product three different ways. You can mail us a check drawn on a US bank or a money order. If you are a member of CompuServe you can register on-line or you can register with a credit card by phone.

Use the Registration Dialog that is located under the FILE menu option on the main menu.

## Technical Support

BFM Software will try to help any user to the fullest of our abilities. We do prefer to help registered users with problems concerning our software, but we will try to help anyone we can. Below are the ways a user can contact us:

• Electronic Service Compuserve - our ID is 73770,1254 or BrettMc

• Electronic Service America On-line - our ID is BrettMc

• Electronic Service MSN (Microsoft Network) - our ID is BrettMc

• Internet Address - our ID is BrettMc@aol.com

• Our mailing address:

BFM Software  
Brett McDonald  
38602 Lancaster Drive  
Farmington Hills, MI 48331

• Phone Number: (810) 661-1797

Hours: Monday-Friday 6:00pm-9:00pm EST and Weekends 11:00am-6:00pm EST  
We do not return phone calls so please keep trying until you reach us.

## What's New

### Release 4.01

CD Wizzard's tray processing now hides the tray icon when in large or small mode. The tray button is hidden when in minimized mode.

The track name is now included in the tray icon tool tip.

The Tray Icon can now be left clicked to toggle play/pause. It is very useful to pause while answering a phone call.

Summary disc printing will now print the last page of the report.

A warning message is displayed explaining the effects of the Output Meter on your system.

### Release 4.00

This program takes advantage of the Windows 95 or Windows NT 4.0 (or higher) Win32 application, ensuring better speed and reliability.

CD Wizzard takes full advantage of the new Windows environment, incorporating many of its new features. CD Wizzard is a distinct improvement over the standard Windows system CD Player.

Tool tips are available on both large and small mode areas and buttons.

A Windows tray icon displays the current CD status. A right mouse button click displays a CD Wizzard menu. The track number is also displayed in the Time Window.

CD Wizzard can print both summary and detailed reports of your CD database.

CD Wizzard has improved import and export functions. Users can easily import CD Wizzard 2.xx INI files, CD Wizzard 3.xx DDB files, Windows CD Player INI files, and comma-delimited files. The Export function offers a wide range of export options to fit the user's needs.

The Disc Database dialog displays all of a disc's information using a Windows treeview format. This information can be edited either within the tree or using the Edit Disc dialog window.

Individual tracks have a new feature that lets the user identify the individual track artist, composer, and a user defined field. This is especially useful for Various Artist discs.

A Date field enables the user to categorize each disc by copyright year.

CD Wizzard can now play WAV sounds for different events, such as opening and closing the CD drive door. A series of sounds are included, or the user's own can be used.

CD Wizzard now uses the CD-ROM drive letter name to configure the player, allowing for easier multi-CD-ROM drive usage.

Small window mode has three text windows to display full disc and track information.

The user can reconfigure the Large and Small windows to display whatever disc or track information the user desires.

The user can set the position and the length of a track that has been sampled to be set.

Eject and close works on most drives, even those with faulty BIOSs.

CD Wizzard uses the new WinHelp 4.0 system. It offers full contents, index, and find functionality. It also offers context popup help or the "?" button on all dialog windows.

New Programmed Random mode will randomly play the programmed tracks selected. The

Track Box Display will display only the tracks programmed.

## Where to Look for the Latest Release of CD Wizzard

The following are different places to look for the latest release of CD Wizzard. The file name should be CDWxxx.ZIP, where the xxx is the latest release of CD Wizzard.



**CompuServe** - Go CIS:BLASTER and look in 3rd Party Software Library, or Go CIS:CDFORU and look in CD Audio Players Library



**America Online** - Goto keyword PC MULTIMEDIA and look in the Software Libraries under CD-ROM Utilities Library



**Internet** - Point your browser at <http://users.aol.com/brettmc/homepage.htm> or <http://ourworld.compuServe.com/homepages/brettmc>

You can also try to search for keywords of BFM, CD-ROM or CD PLAYER on local BBSs and internet sites.

If you can't find the latest release at the above sites or you don't have access to them, you can send us \$4.00 for shipping and we will send you the latest release of all our software. Just include your name, address, and send a check for \$4.00 drawn on a US bank made payable to BFM Software.

## **Why the Output Meter Locks the Sound Card**

When the Output Meter is turned on, system sounds will not be heard. Also, other applications will not be able to open the sound card.

This is because the Output Meter opens the sound card for audio input. This means that it is requesting the sound card to continuously send the current digital audio data to CD Wizzard. The digital data will be translated and displayed on the Output Meter display. Since the sound card is opened by CD Wizzard, other programs will not be able to open the sound card at the same time.

To hear system sound effects or to allow other applications to use the sound card, just turn the Output Meter off. A button on the large and small modes will turn the Output Meter on and off.

The Output Meter is automatically turned off when CD Wizzard is minimized and turned back on when restored. CD Wizzard will not affect other applications while minimized.

**Menus - menu\_**



## Menu Commands

These are the menus on the CD Wizzard large mode menu bar.



File Menu



Discs Menu



Options Menu



Help Menu

The CD-ROM Controls Menu is used to control CD-ROM drive functions. Right click on the CD Wizzard icon in the Windows tray area for the CD-ROM Controls Menu. The CD-ROM Controls Menu is also under the File Menu on the CD Wizzard large mode menu bar.

The Disc Data's tree control menu is used to perform commands on the entries in the disc list.

## File Menu

The File Menu includes commands that enable the user to get control of the entire program. They are as follows:

 Register Command

 CD-ROM Controls Menu

 Uninstall Command

 Exit Command

## **Register Command**

Selecting the Register Command will cause Registration dialog box to be displayed. The Register Command is used to register the program.

The register dialog has directions on the steps needed to register the program. This program must be registered after the 30 day trial period.

## CD-ROM Controls Menu

These are the menu commands that control the CD-ROM drive. They are listed below:

Restore Main Window Command - Restore or show CD Wizzard window.

Play / Pause - Start playing a CD or Pause playing.

Scan - Play the number of seconds specified in the Player Options of each track in the play list.

Stop - Stop playing.

Eject / Close - Eject the current CD or close the drive door.

Display Track Play List - Displays the current track play list dialog.

Track Reverse - Go to the previous track in the play list.

Track Forward - Go to the next track in the play list.

Volume Up - Increase the volume of the CD-ROM device.

Mute/Unmute Volume - Mute/Unmute the volume of the CD-ROM device.

Volume Down - Decrease the volume of the CD-ROM device.

Cancel Menu Command - Cancel the CD-ROM Controls menu.

## **Restore Main Window Command**

This command will restore the main window. If the window is minimized it will be restored to large mode. If the window is hidden by other windows the main window will be displayed.

## **Cancel Menu Command**

This command will cancel the popup CD-ROM Controls menu.

## **Display Track Play List Command**

This command displays the Track Play List Dialog with information about the current track play list. This dialog allows the user to select a different track to be played.

## **Uninstall Command**

Selecting the Uninstall Command will remove CD Wizzard from the user's system. All program and data files will be removed. Also, the Windows CD Player will be reset as the system CD Player.

The user must restart windows for the uninstall to complete. After Windows has been restarted the user can delete any shortcuts or directories that refered to CD Wizzard.



## **Exit Command**

Selecting the Exit Command from the File Menu will terminate CD Wizzard.

## Discs Menu

The Discs Menu includes commands that enable the user to work with CDs. They are as follows:

-  Edit Current Disc Data Command
-  Copy Track Play List Command
-  Print Disc Data Command
-  Assign Orphan Disc Data Command
-  Disc Database Command
-  Database Statistics Command
-  Verify and Repair Database Command
-  Import Data into Database Command

## **Edit Current Disc Data Command**

This command displays the Edit Disc Data Dialog with information about the inserted CD. This dialog allows the user to change all the information about the disc in the database.

## Copy Track Play List Command

This command displays the Copy Tracks Data Dialog to allow the user to copy disc information to the windows clipboard.

## **Print Disc Data Command**

This command will send the current disc's data to the printer. A system printer setup dialog will be displayed so the number of copies can be entered.

## **Assign Orphan Disc Data Command**

This command will display the Assign Orphan Disc Data Dialog.

## Disc Database Command

This command displays the Disc Database dialog with all the discs CD Wizzard has saved in its database. This command can be used to delete unwanted discs from the database.

## **Database Statistics Command**

This command displays Database Statistics dialog. This dialog includes information on the disc database.



## **Verify and Repair Database Command**

This command will verify the disc database and repair any problems discovered. Use this command if errors are reported in the disc database.


During the verify and repair process, status messages will be displayed on the titlebar of the main window. These messages give an indication of the progress of the verify and repair.


## **Import Data into Database Command**


This command will import data into the database. It will display the Import Options Dialog. The user will be able to pick a file and describe the type/format of the data.


## Options Menu


The Options Menu includes commands that enable the user to control options of the program. The options are of the following categories:


 Display Options - options to configure the main window's look and feel.

 Layout Options - options to configure the main window's layout.

 Playback Options - options to configure the playing of CDs.

 System Options - options to configure the user's CD-ROM Drive and other system settings.


 Database Options - options to configure the disc database.

 Event Sounds Options - options to configure the event's sounds.

## Help Menu


The Help Menu includes options that enable the user to get help for the program.

For more information, the user should select the Help Menu Command Name:

 Help Contents Command

 Help Index Command

 Using Help Command

 About Command

## Help Contents Command

The Help Contents Command is used to invoke the Windows Help engine. It will start up with the help contents for CD Wizzard.

## Help Index Command

The Help Index Command is used to invoke the Windows Help engine. It will start up with the help index for CD Wizzard.

## **Using Help Command**

The Using Help Command will display help on the Using Windows help system.

## **About Command**

The About Command will display a short dialog that displays copyright and registration information. The More button may be pressed to display a picture of the development team for this software. The Register button may be pressed to register the software.



## Treeview Menu

The Treeview Menu is displayed whenever the user clicks the right mouse button on the disc data tree control.

For more information, the user should select the Treeview Menu command name:

- Edit Disc Command
- Copy Disc Data to Window's Clipboard Command
- Print Disc Data Command
- Delete Disc Data Command
- Play Sample for Disc or Track Command
- Export All Found Discs Command
- Print All Found Discs Command

## **Edit Disc Data Command**

The Edit Disc Data Command will edit the selected disc data with the Edit Disc Data Dialog.

## **Copy Disc Data to Windows's Clipboard Command**

The Copy Disc Data to Windows's Clipboard Command will copy the selected disc data to the Copy Tracks Dialog.

## **Print Disc Data Command**

The Print Disc Data Command will print the selected disc data.

## **Delete Disc Data Command**

The Delete Disc Data Command will delete the selected disc from the database.

## **Play Sample for Disc or Track Command**

The Play Sample for Disc or Track Command will play the track's sample of the disc selected. If another field besides a track field was selected, then the first track's sample of the selected disc will be played.

## **Export All Selected Discs Command**

The Export All Selected Discs Command will export all the discs found. The Export Options Dialog will be presented so the user can choose the format of the export file.

## **Print All Selected Discs Command**

The Print All Selected Discs Command will print all the discs found. The Print Options Dialog will be presented so the user can choose the printout format.













**Keyboard - key\_**

## Keyboard

Keyboard commands are shortcuts to the button options.

The F1 (Help) key can be used to invoke help while either the Main Window or the Small Window has focus. Context sensitive help can be displayed for dialog boxes. To display context sensitive help on a dialog, user first sets the focus to a control then the F1 key is pressed. Also, when a menu item is highlighted, press F1 to get help on the menu item command.


The following are the keyboard shortcut commands:

Button	Short-cut Key
 <u>Play / Pause</u>	'Ctrl-P'
 <u>Scan</u>	'Ctrl-A'
 <u>Stop</u>	'Ctrl-S'
 <u>Eject / Close</u>	'Ctrl-E'
 <u>Display Track Play List</u>	'Ctrl-T'
 <u>Track Reverse</u>	'Ctrl-R'
 <u>Track Forward</u>	'Ctrl-F'
 <u>Volume Up</u>	'Ctrl-U'
 <u>Mute/Unmute Volume</u>	'Ctrl-M'
 <u>Volume Down</u>	'Ctrl-D'

**Mouse - mouse\_**

## Mouse

The mouse has a few special functions in CD Wizzard. In the Main Window it is used to press the buttons. In certain areas the mouse may be clicked to have special meaning.

When the  cursor is displayed, these special actions are active. The Status Bar will have a short message about what happens in that area if the user has the Status Bar Help Text option turned on in the Layout Options.


Click the right mouse button on the CD Wizzard Tray Icon and the CD-ROM Controls Menu will be displayed. Left click on the icon and play/pause will be toggled. Double left click on the icon and the Main Window will be restored.


## Definitions - def\_


## CD Wizzard Definitions

The following are the defined terms of the program:

 Autoplay


 CD-ROM


 CD Wizzard


 Clipboard

 Disc

 Mixer

 Output Meter

 Play List

 Sound Event

 Track

## **Autoplay**

Autoplay means that when a user inserts a disc into the CD-ROM drive, the disc will be automatically started. If it is a music disc, then the registered CD Player will start to play the disc. If the disc is a data disc, then the install program for the disc will be run for the disc.

## CD-ROM

A CD-ROM stands for Compact Disc Read Only Memory disc. A CD-ROM drive uses a laser beam to read very tiny ones and zeros from the encoded foil layer of the disc. A CD-ROM drive can handle over 650 megabytes of data.



## **CD Wizzard (tm)**

CD Wizzard is a copyrighted work created by BFM Software.

CD Wizzard is a trademark of BFM Software.



Copyright © BFM Software 1996

Copyright © Brett McDonald 1996

All rights reserved.

## **Clipboard**

This is the Windows system clipboard. The clipboard is used to place temporary information that is being copied. A user places information on the clipboard by copying and then pastes the information into another program.

## Disc

A disc stands for a CD-ROM disc. Discs come in a few difference types: Audio - contain audio tracks, Data - contain a data track, and Mixed - which contain both a data track and audio tracks. A typical home CD Player can only read Audio CDs. The CD-ROM drive in a computer can read all three.

## **Mixer**

A mixer is a program that is used to control the combination of multiple inputs into a single output. CD Audio, WAV output, MIDI, and Line-In are examples of input sources. The mixer combines the inputs into one signal that is sent to the speakers. A particular input source must be selected to record. This is the same as a home stereo, where the tuner is used to select the source to record. It also sets the volume of each input.

## **Output Meter**

An Output Meter is a graph of the output levels of a digital signal. The chart shows the digital audio source in a line graph. The chart is updated as the signal is received from the sound card.

## Orphan Disc

A orphan disc is an entry in the database that does not have a valid DiscID. Since it does not have a valid DiscID it will never be selected by inserting a disc.

Orphan discs occur when discs are imported into CD Wizzard. Since all CD Player programs use a different method to build the unique keys to recognize a disc we cannot import reliably import the DiscID. If we did, the other programs DiscID would not match CD Wizzard's DiscID and the Disc Entry would never be accessed. So, the imported entries are given dummy DiscID's that make them orphans.

Orphan Discs must be assigned to discs. An orphan entry can be assigned to a disc by the Assign Disc Menu Command. After the orphan is assigned It will then have a valid DiscID and, can be used normally from that point.

## **Play List**

This is the list of tracks that is currently selected to be played. In normal mode all tracks are played sequentially. In shuffle mode the tracks are in random order. Programmed mode allows the user to select the order in which the tracks are to be played.

## **Sound Event**

A sound event is when a user performs a CD Wizzard function such as starting CD Wizzard, ejecting a disc, or pressing the play button. The user can assign a sound to be played when the event occurs.



## Track

A track is a part of a disc that can contain one song for an audio disc or many files of information on a data disc. A track on CD-ROM is different than a computer disk because the tracks spiral together. A computer disk has many concentric tracks that do not intersect. This is why CD-ROM drives have a much slower access time than computer disk drives.

